



HOME DESIGN

Exterior Features

- Front entry to be 8' high raised panel insulated steel door with security viewer
- Harloc antique brass exterior door hardware with dead bolt
- Door bell with chime
- Roof tile to be "S" tile design, tri-color with antiquing, Entegra naildown application
- Wall construction 1st and 2nd floors to be reinforced concrete block with stucco exterior finish, reinforced concrete floors throughout
- Covered patio or balcony at each unit
- Windows manufactured by Kinco, (or equal) white anodized aluminum frames with grey tint glass with screens
- Garage doors to be raised paneled steel with remote opener
- Termite treated foundation
- Facia to be rough sawn cedar wood
- Exterior wall sconce by developer
- Storm shutter system to meet PBC minimum codes, stored in garage
- Professionally designed landscaping package, trees, sod and irrigation

Interior Features

- Interior walls, trim, and doors to be painted with one color throughout
- Walls and ceilings to be knockdown finish
- Base board to be tear-drop design wood base board with mitered corners
- Casing to be wood triple OG edge style, fancy
- Interior doors to be 6-panel raised, 8' high
- Interior door hardware: Harloc polished brass lever
- Art niches and arches as per plan
- Curved bullnose design on main living area corners
- Architectural ceiling treatments as per plan
- Imported white-gray marble window sills
- 18"X18" imported ceramic tile flooring (main flooring)
- Plush carpet with 80 oz. padding in all bedrooms/dens
- Ceiling paddle fans by Developer
- A.O. Smith Electric 50 gallon Energy Miser quick recovery hot water heater

Gourmet Kitchen and Laundry Room Features

- GE Built-in oven and cook top
- GE Microwave oven
- GE Profile refrigerator with ice and water in the door
- GE Multi-Cycle custom dishwasher
- Badger V disposal
- Cabinets with wood maple, oak or white MDF panel doors
- 42" upper cabinets with crown molding and valances
- Choice of five different finishes (wood doors)
- Matching panels on refrigerator and dishwasher
- Dayton #DEMR Sink Stainless steel top-mount, 20/80 bowl
- Moen faucet, single handle chrome model #7470
- Kitchen counters to be granite with 1 1/2" bullnose edge and 4" granite back splash
- White, 42" low pressure laminate mica cabinets in the laundry room with square edge top and 4" backsplash
- GE heavy duty large capacity washer
- GE heavy duty large capacity dryer

Luxurious Master Suite and Bath Features

- Spacious walk-in closets with air-vented shelving
- His and Hers 36" European maple panel door vanity
- 18"X18" imported Saturnia marble floors and shower walls to 7' high (thin set)
- Gold-tone finished shower door with aluminum frame and clear glass door style manufactured by Alumax, standard height
- Shampoo niche in shower
- Water closets to be UR model #4167, elongated design, 1.6 gallon flush, biscuit color
- Moen 8" spread Monticello polished brass finish with levers #4570, Positemp shower valve Moen #62370M/MT182, polished brass finish
- Counter tops to be CM lacquered look with standard OG edge and integral bowls

Elegant Secondary Bath Features

- Imported 4"X6" ceramic tile floors and shower walls to 7'
- White matte MDF raised panel door, vanities 36" high
- Chrome finished aluminum shower frame with standard height clear glass door or pass through by Alumax
- Water closets to be UR model #4196, two-piece white toilets in secondary baths
- Moen Monticello 4" spread chrome with levers #4560
- Countertops to be CM lacquered look with standard OG edge and integral bowls
- Shampoo niche in shower

Powder Room Features*

- Maple panel cabinet doors, 36" high vanity
- Imported ceramic tile floor
- Water closets to be UR model #4167 elongated design
- Moen 8" spread chrome faucet, model #4570

Electrical Features

- 200 AMP electric service
- 75 Watt halogen lamp hi-hat recessed fixtures as per electrical plans
- All bedrooms to have one 1/2 switched outlet
- All walk-in closets to have jamb switches and fluorescent fixtures
- Laundry room and garage to have fluorescent fixtures
- Decora light switches
- Prewire for multi-line phone outlets
- Prewire for cable-ready TV outlets as per plan
- GFI outlet in garage and at patio

Convenience and Security Features

- Central vacuum system
- Two sets of dual cone hi-fi speakers with volume control
- Fire Suppression System in all rooms
- Smoke detectors by code
- Digital security system with one key pad at entrance



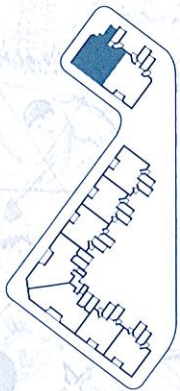
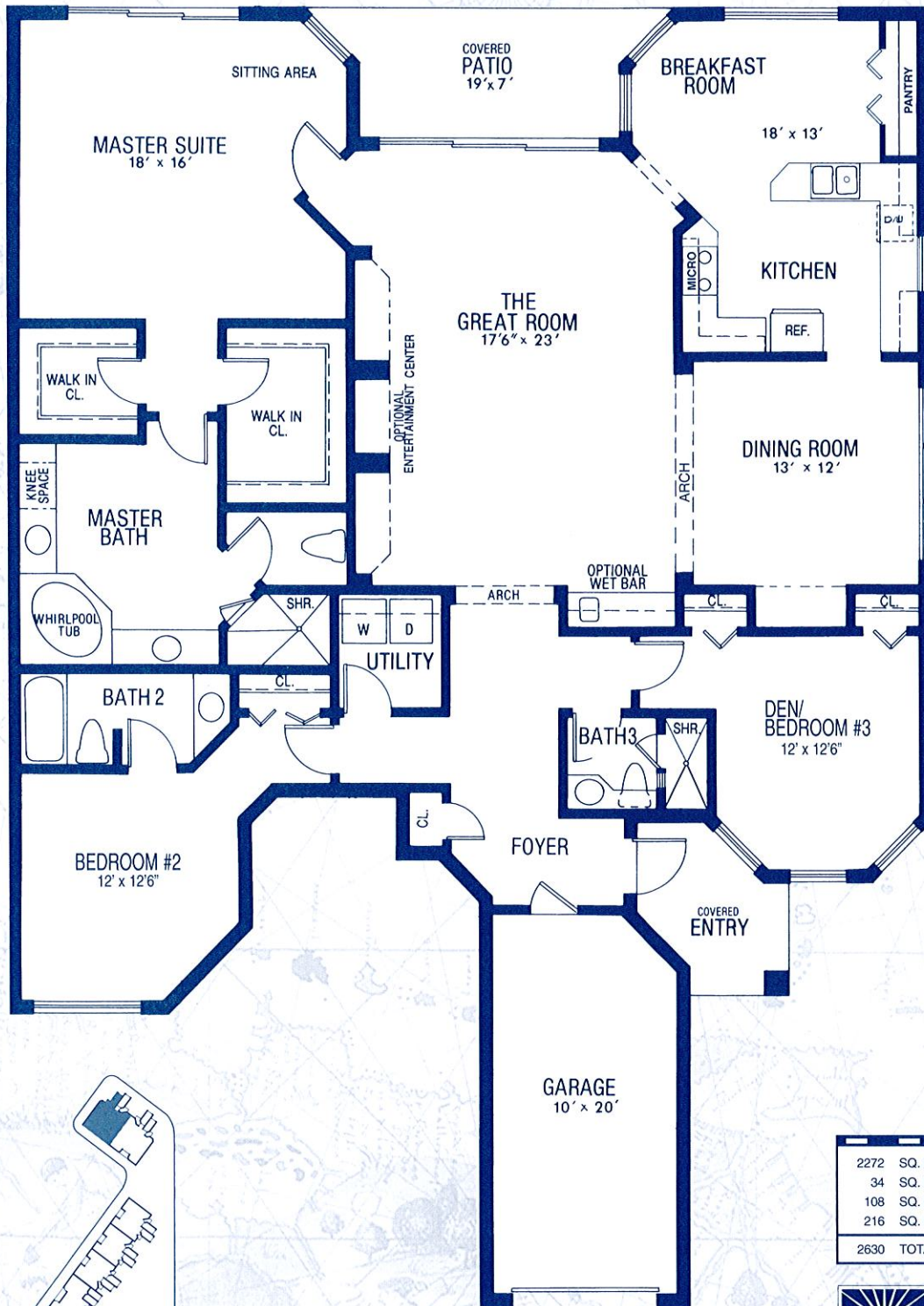
Building the Best of Boca.
(561) 750-6607

Marble is a natural material that has many characteristic. Each shipment is unique unto itself as is each price. Our models show you example of how our builder's choice marble can look. However, it can change dramatically from shipment to shipment and even within each shipment. We take no responsibility for what each shipment may represent. Saturnia stone can have grey or red grains running through and some have more holes than others and background colors run creamy to dark brown. Crema marfil is filled marble which runs from milky to darkish brown in background color and has a tendency to have a red grain running through it. If you want material that looks identical to each piece, stick with ceramic tiles. The beauty of marble is that it is uniquely different, as we are.

*In units with powder rooms

*Builders reserve the right to make equal substitutions to brand name products identified herein.





2272	SQ. FT. UNDER A/C
34	SQ. FT. COVERED ENTRY
108	SQ. FT. COVERED PATIO
216	SQ. FT. GARAGE
2630	TOTAL SQ. FT.



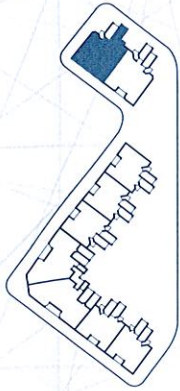
Building the Best of Boca.

(561) 750-6607



All dimensions are approximate, we reserve the right to change specs.

FIRST FLOOR: Unit I

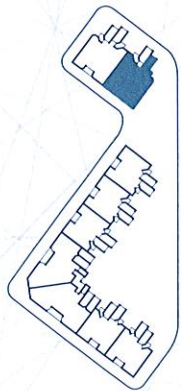
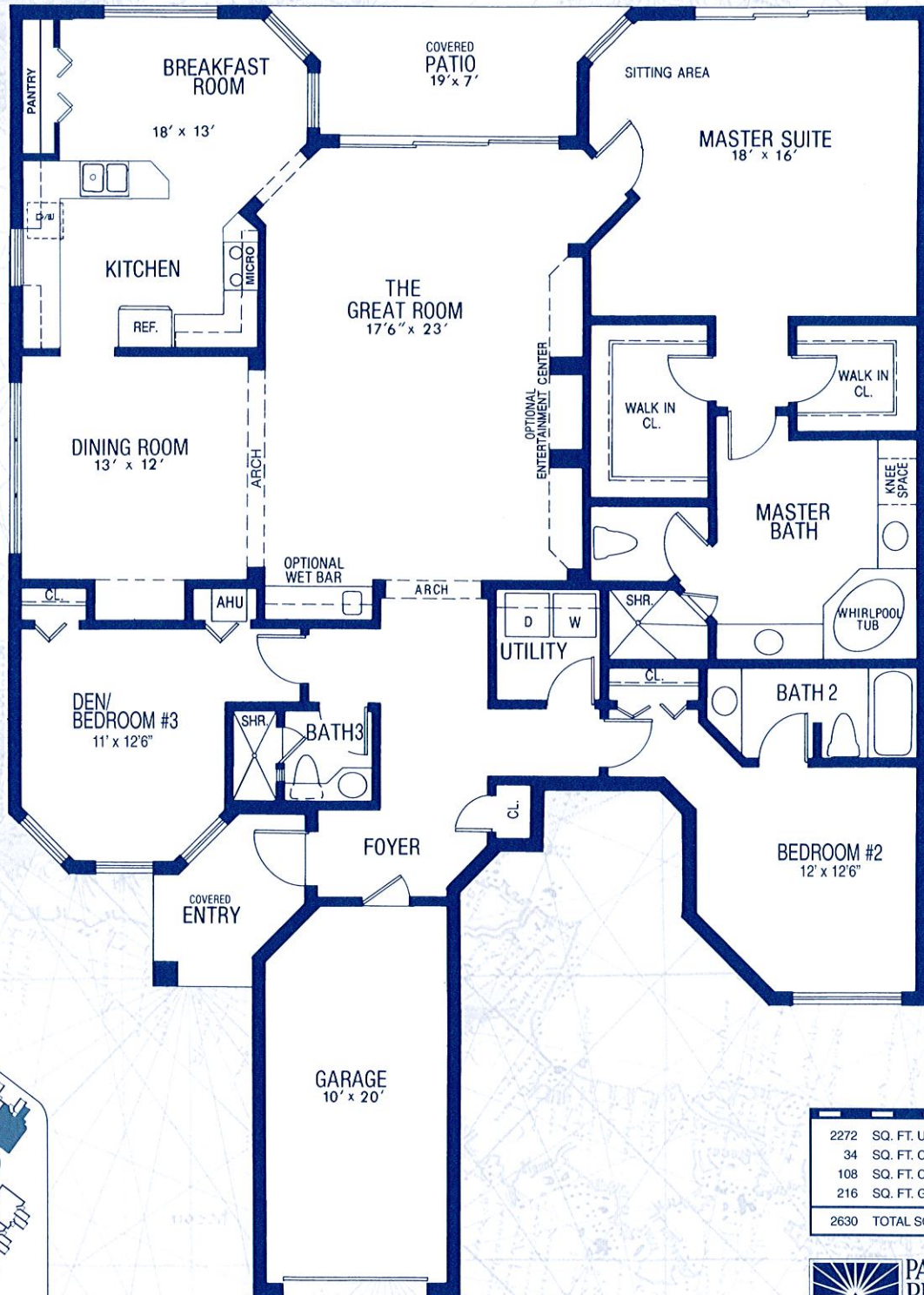


2385	SQ. FT. UNDER A/C
42	SQ. FT. COVERED ENTRY
108	SQ. FT. COVERED BALCONY
230	SQ. FT. GARAGE
2765	TOTAL SQ. FT.


PARAMOUNT BUILDING CORPORATION
 Building the Best of Boca.
 (561) 750-6607

All dimensions are approximate, we reserve the right to change specs.

SECOND FLOOR: Unit 2



2272	SQ. FT. UNDER A/C
34	SQ. FT. COVERED ENTRY
108	SQ. FT. COVERED PATIO
216	SQ. FT. GARAGE
2630	TOTAL SQ. FT.



Building the Best of Boca.

(561) 750-6607

All dimensions are approximate, we reserve the right to change specs.

FIRST FLOOR: Unit 3